

ZTVs and Visualisations

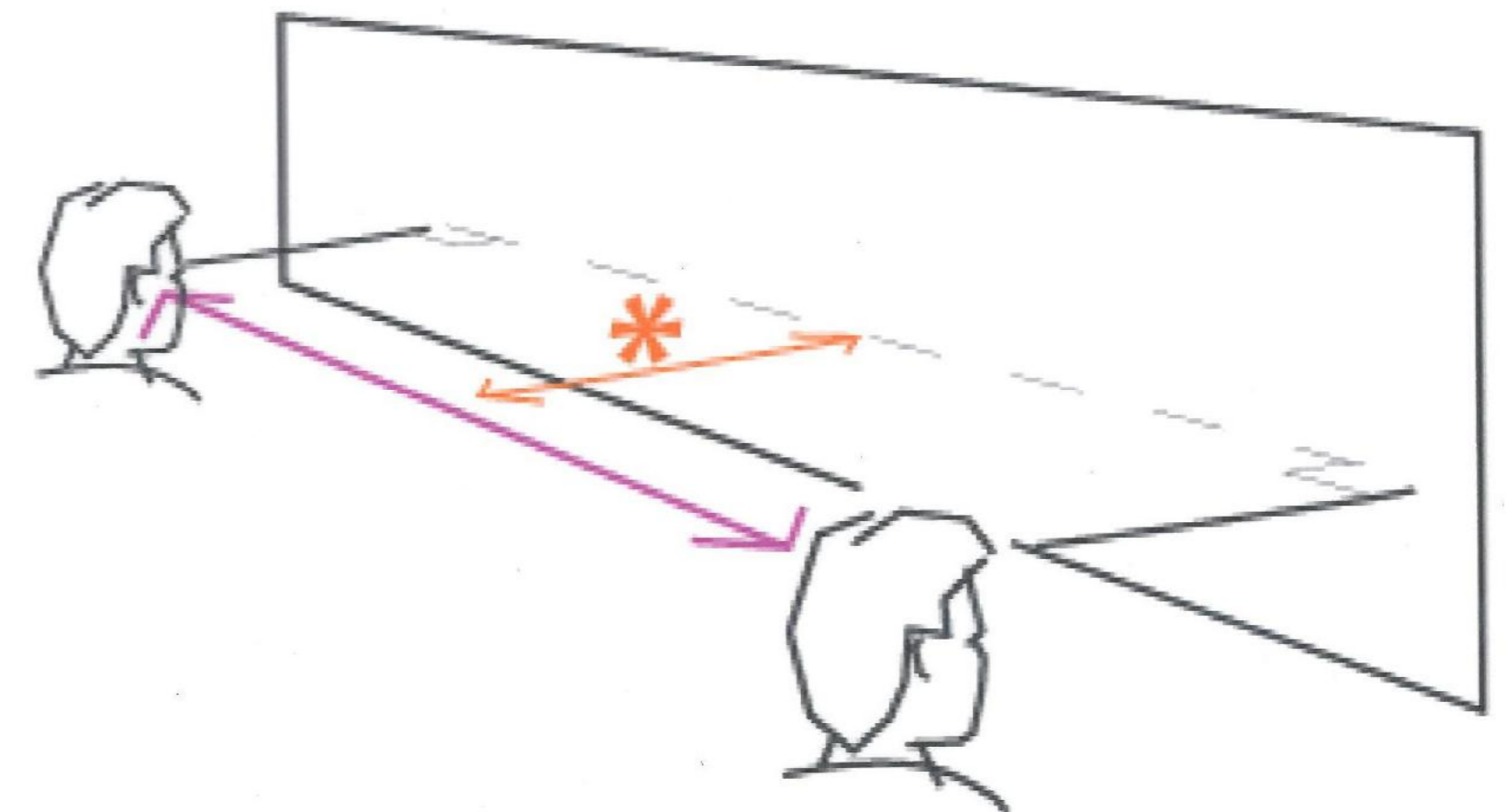
For each site we have produced a tip height Zone of Theoretical Visibility map. This map also shows the viewpoints proposed at Scoping along with the two viewpoints for each site for which wireframes and photomontages have been prepared for the purposes of these community open days. An explanation of what a ZTV is and how to view the visualisations is provided below:

Zone of Theoretical Visibility (ZTV)

- ZTVs are computer generated and illustrate the theoretical visibility of the turbines, based upon local topography and the height of the turbines. They do not take account of screening elements such as buildings and vegetation which can substantially reduce visibility.
- ZTVs are not distance sensitive in that they do not take account of the decreasing size of the turbines with increased distance as a proportion of the view.
- ZTVs also do not distinguish whether the theoretical visibility of the turbine extends to full turbine height or just the blade-tips, which can have a considerable effect on the visual influence of the turbines.
- Notwithstanding these limitations, ZTVs are a useful tool in identifying areas from which the turbines will be potentially visible.

Photomontage Viewing Instructions

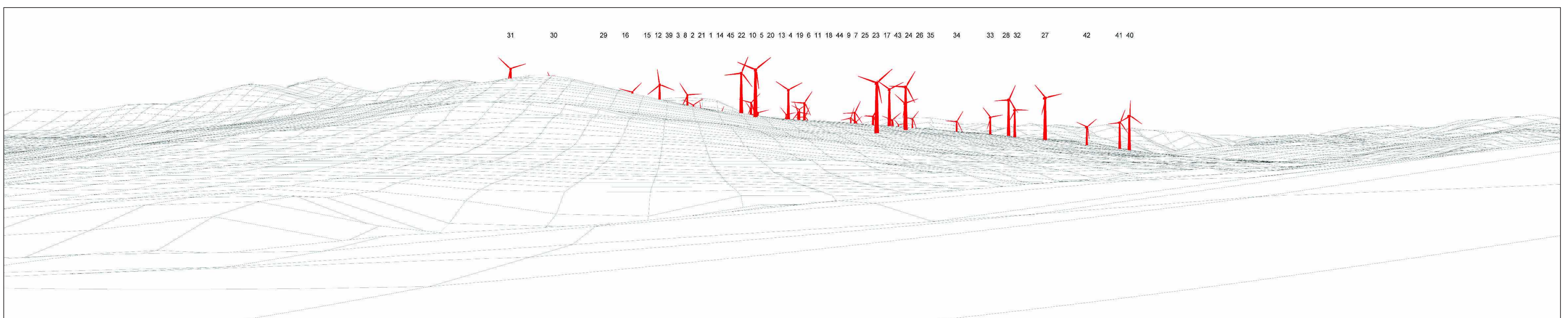
- Please note that it is important to view the visualisations (Existing view, Wireline and Photomontage) from a distance of 55cm*. A line has been marked on the floor to help you gauge where to stand. This is to ensure that an accurate impression of the proposed wind farm is obtained.
- Your view of the visualisation must always be perpendicular to the plane of the image and viewed by moving along in front of it, as shown in the diagram.



view from B7000 near Arndarroch



Existing view from B7000 near Arndarroch



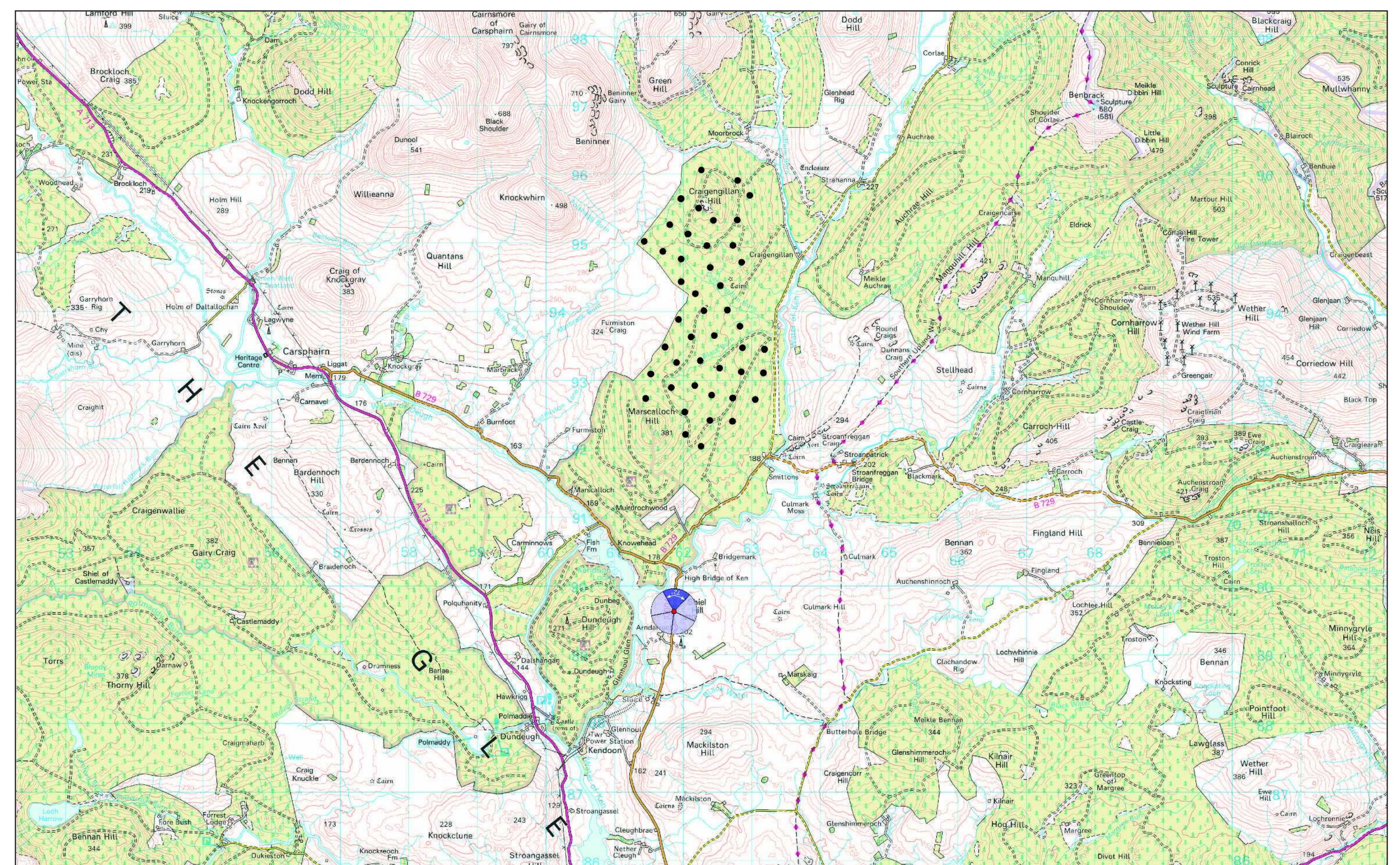
Computer generated wireline showing Shepherds' Rig Wind Farm in red



Photomontage view from B7000 near Arndarroch showing Shepherds' Rig Wind Farm

- Viewpoint Grid Reference - E261864 N589630
- View Direction - 5°
- Viewpoint Elevation - 185m AOD
- Horizontal Field of View - 72°
- Nearest Proposed Turbine - 2.4km
- Viewing Distance - 55cm
- Date and Time of Photo - 08.07.2013, 15:30pm

Viewpoint location plan



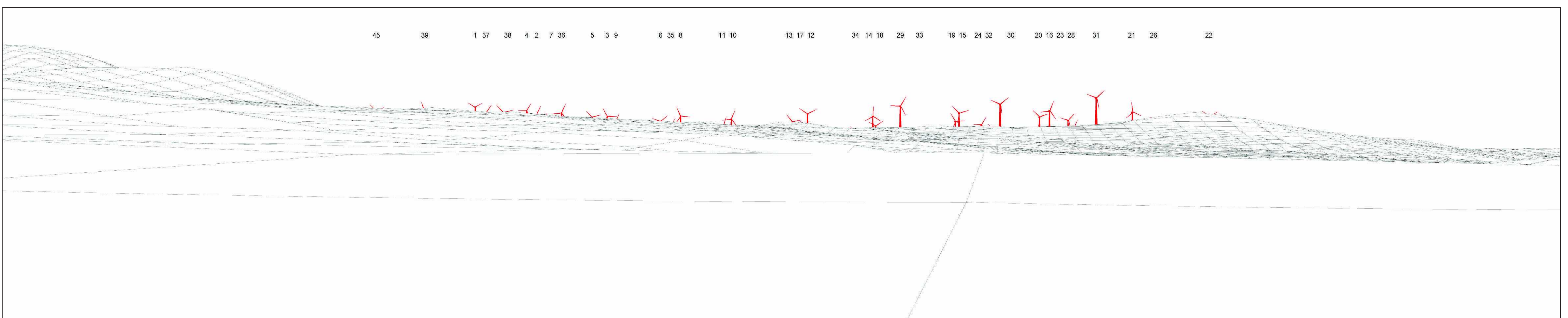
Wireline: While the landform and the curvature of the earth are taken into account, no features such as trees or buildings, which might otherwise obscure the views, are accounted for in the wirelines

Note: Visualisations can give an impression of the appearance of a landscape and proposed wind farm. However, neither photographs or visualisations can convey a view exactly as it would be seen by the human eye in reality.

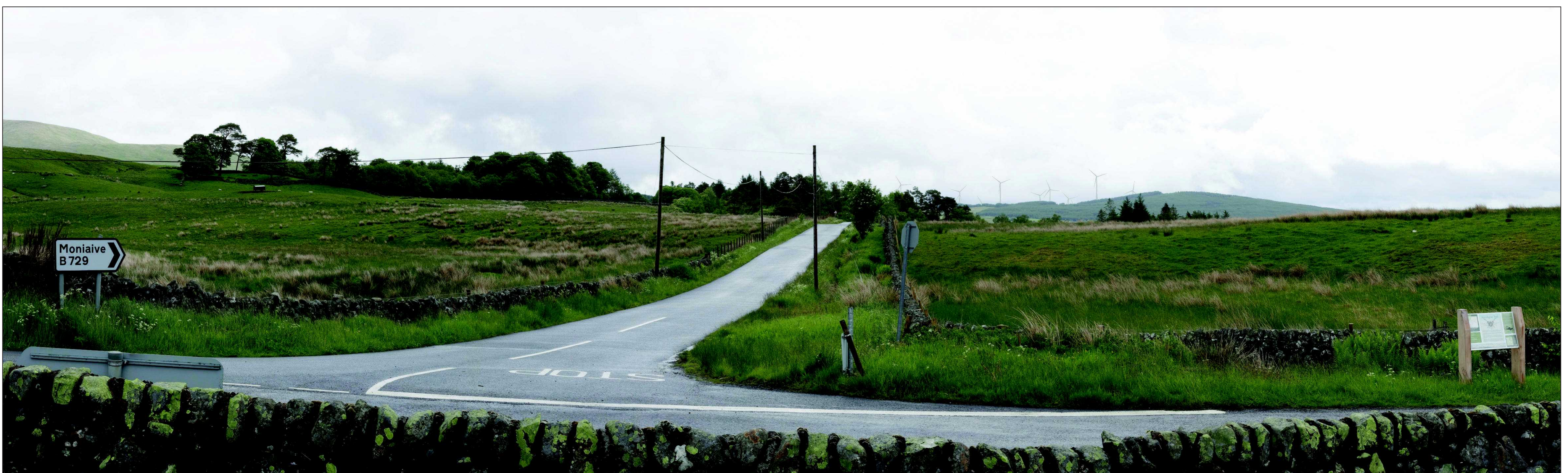
view from southeast of Carsphairn (junction of A713 & B729)



Existing view from southeast of Carsphairn



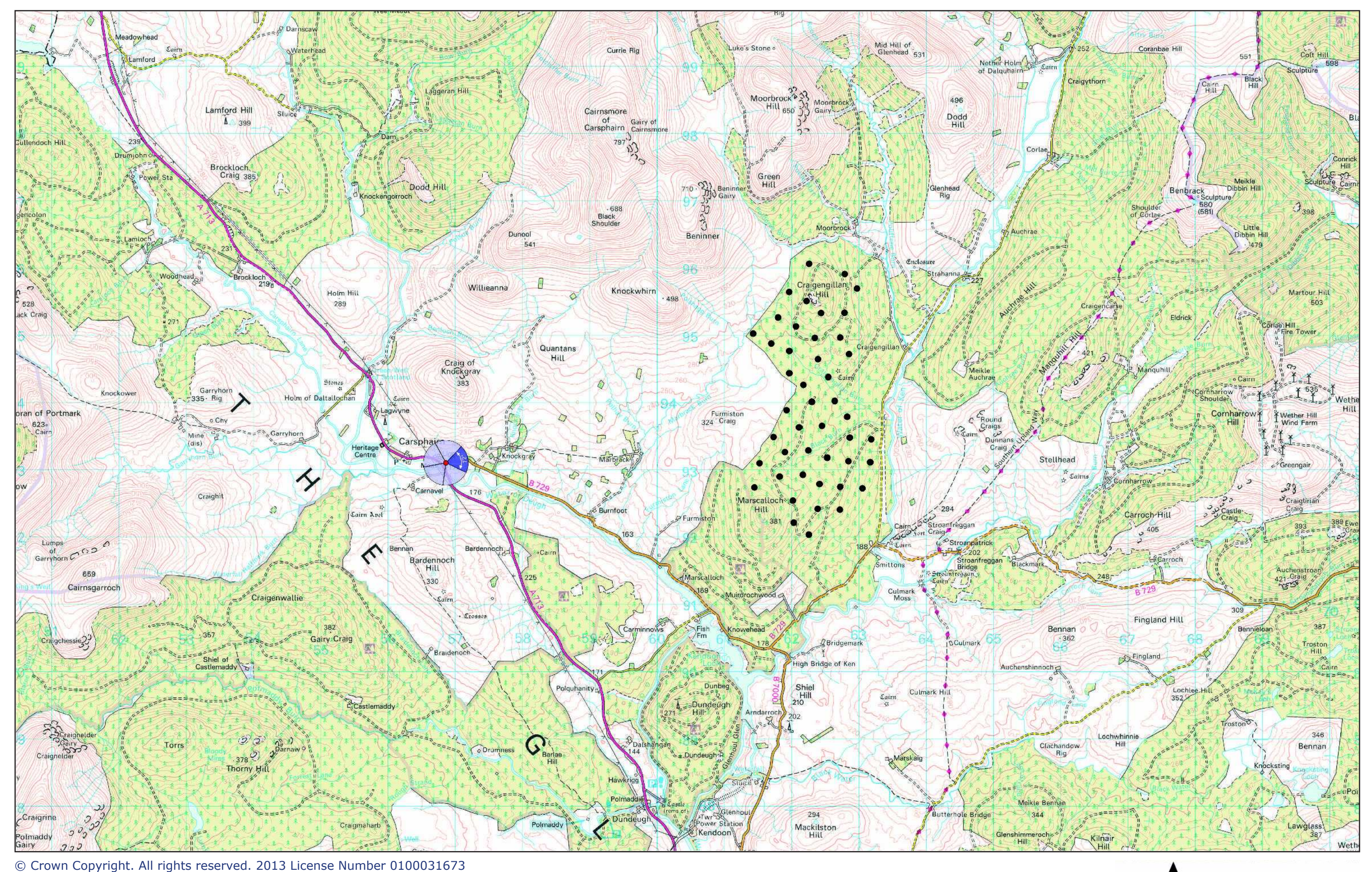
Computer generated wireline showing Shepherds' Rig Wind Farm in red



Photomontage view from southeast of Carsphairn showing Shepherds' Rig Wind Farm

- Viewpoint Grid Reference - E256861 N593099
- View Direction - 80°
- Viewpoint Elevation - 183m AOD
- Horizontal Field of View - 72°
- Nearest Proposed Turbine - 4.6km
- Viewing Distance - 55cm
- Date and Time of Photo - 15.06.2013, 11:30am

Viewpoint location plan



Wireline: While the landform and the curvature of the earth are taken into account, no features such as trees or buildings, which might otherwise obscure the views, are accounted for in the wirelines

Note: Visualisations can give an impression of the appearance of a landscape and proposed wind farm. However, neither photographs or visualisations can convey a view exactly as it would be seen by the human eye in reality.